

Recruitment Deck

Global Sales Manager

OWENS CORNING BM KOREA



설계사무소를 넘어,
글로벌 비즈니스의 주역으로

건축학 전공자로서의 깊은 이해와 재능을 바탕으로
아시아 시장의 프로젝트 영업과 전략 마케팅을 주도할 인재를 찾습니다.
건축학적 '계획' 역량을 기반으로 글로벌 인프라를 확장해 나갈
핵심 전문가의 커리어를 시작하십시오.

OWENS CORNING

Global in Scope, Human in Scale

Our Mission, Purpose & Values

OUR MISSION

To build a sustainable future through material innovation

OUR PURPOSE

Our people and products make the world a better place

OUR VALUES

Global in scope, human in scale

Caring
Curious
Collaborative
Committed



OUR PEOPLE AND PRODUCTS MAKE THE WORLD A BETTER PLACE

Company Values

- Living safely
- Winning with customers
- Leading in quality
- Expanding our impact through sustainability
- Turning knowledge into value
- Striving to be better, every day



WE BUILD MARKET-LEADING BUSINESSES; GLOBAL IN SCOPE HUMAN IN SCALE

Purpose:

Our people and products make the world a better place

- This is why we exist.
- We make product that make the world warmer, safer and more efficient.
- We do this every day in our customers' markets and in our employees' communities.
- We create opportunities for our people and our customers to provide for their family.

Vision

Living safe

- At work, At home, Safe is a critical measure of a company's ability to execute. Our Safety Stand helps to define further what it means to live safe

Winning With Customers

- Understanding customer needs and adapting accordingly
- Predictable through cycles and can solve customer problems quickly
- Maintaining a relationship with the customer that creates unique value

Leading in Quality

- We will clearly connect quality and cost for our people
- We will stay in front of emerging trends to create a competitive advantage

Quality is now defined in terms of "craftsmanship" for our customers

- We will stay in front of emerging trends to create a competitive advantage

Expanding Our Impact Through Sustainability

- Meeting the needs of the present without compromising the world we leave to the future
- Striving to become a net-positive company
- Reducing our environmental footprint(impact); growing our handprint(positive influence)

Turning Knowledge Into Value

- How we define innovation
- Starts with top innovative talent who love to create and apply materials, manufacturing and building science with imagination
- Strengthen and renew our core businesses
- Be the preferred growth platforms

Striving to Be Better, Every Day

- How we define continuous improvement
- Maximum efficiency
- Making tomorrow more productive than today

Mission:

We aspire to build market leading businesses; global in scope – human in scale

- Every day, our people aspire to make the best possible company we can
- The aspiration part of the mission means our mission is always active, reaching for more
- Global in Scope – In 26 countries, a global sophistication in our business strategies
- Global in Scope – Inclusive, Diverse. We have resources and networks to impact the world
- Human in Scale – How we care about people is how we show we are a unique company
- Human in Scale – We help build houses, buildings and cities; the wind energy industry; fuel-efficient cars... products and applications that help people live better lives
- Human in Scale – Act locally, work personally, make decisions quickly – person to person



OWENS CORNING History & Milestones



70년 연속 포춘지 선정
500대 기업



\$11b
IN SALES
110억불 매출달성
2024년 기준*

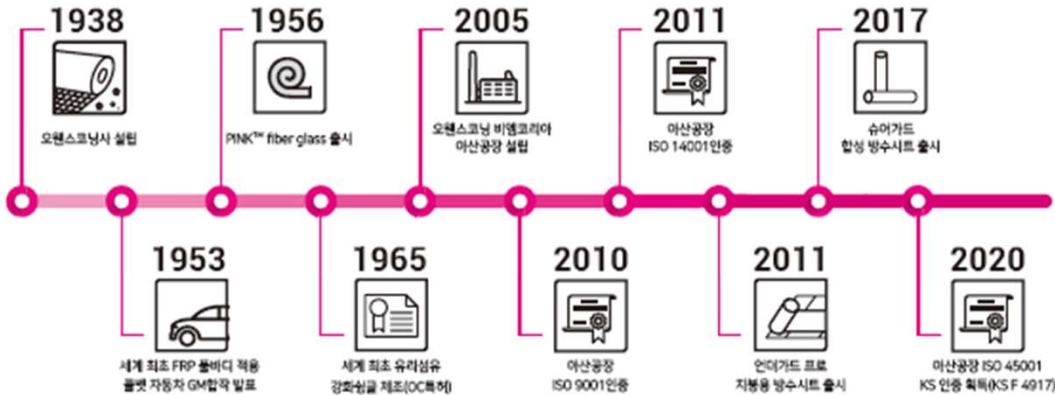


25,000+
약 25,000명의
임직원



31
전세계 31개국에서
생산, 연구개발 및 영업본부 운영

OWENS CORNING HISTORY

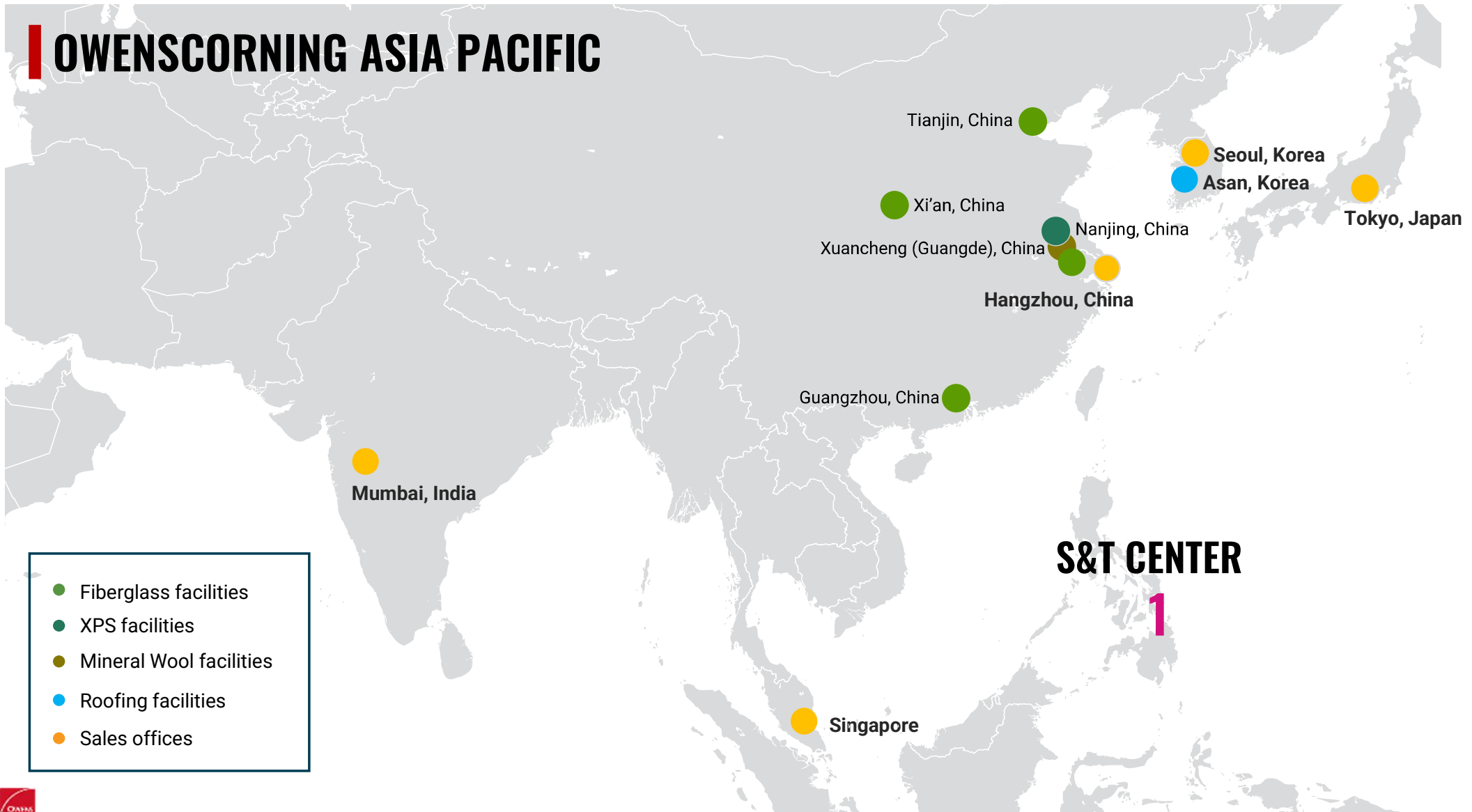


OUR SYSTEMS MAKE MORE POSSIBLE

오웬스코닝은 1938년 세계 최초로 유리섬유 상용화에 성공한 글로벌 기업입니다. 안전과 품질을 최우선 모토로 건축자재 및복합소재 분야에서 혁신적인 신기술과 공법을 지속적으로 개발하는 글로벌 시장 선도 기업으로, 전세계 31개 국가에서 약 25,000명의 임직원과 함께 일하며 차별화된 경쟁력을 확보하고 있습니다. 글로벌 운영 플랫폼 구축을 통한 건축물의 방수, 외장, 단열, 에너지 효율, 재생 에너지와 관련 솔루션을 개발, 제조, 유통하고 있는 오웬스코닝은 모든 인류의 지속 가능한 성장을 위해 끊임없는 연구와 기술 개발로 더 좋은 세상을 만들어 가고 있습니다.



OWENSCORNING ASIA PACIFIC



Products We make : Roofing Asphalt Shingles



NATURAL BEAUTY

The Shingle Color of the Year, Williamsburg Gray, was created to bring something new to a classic look. Our design team was inspired by nature, taking cues from river-washed rocks and granite cliffs to craft a unique shingle color. Up close you see a complex mix of different colored granules—slate grays, volcanic blacks, earthy browns. From the curb they blend to create a wonderfully elegant yet understated look perfectly suited to numerous exterior palettes.



OAKRIDGE® SUPER Shingles



ARMORTAB® SUPER Shingles



CLASSIC® SUPER Shingles



OAKEURO W Shingles

OAKEURO W PLUS Shingles

EURAFLEX Shingles



Products We make : Roofing Components

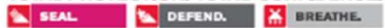
OWENS CORNING 슈어가드® 합성방수시트 미끄럼방지 슈어풋기술® 특허 적용
SUREGUARD® Synthetic Ice & Water Barrier



SEAL.
 Safe, Strong, SUREGUARD®



TOTAL PROTECTION. TOTAL CONFIDENCE.™

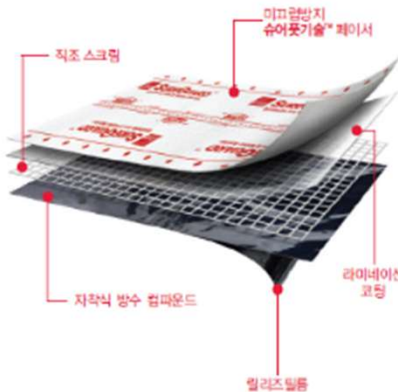


슈어가드® 제품소개

슈어가드® 합성방수시트는 뛰어난 내구성의 신소재(Synthetic)소재와 특허받은 미끄럼방지 슈어풋기술®을 적용한 고품성 시공보호막(WB)으로, 모든 주요 지붕재료의 전 단계에 시공하여 지붕보호 효과를 극대화시킬 수 있는 글로벌 건축자재 전문기업 Owens Corning의 혁신적인 신제품입니다.



제품 상세도



슈어풋기술® 이점

모든 슈어가드®에만 적용된 오일스프링의 표면 미끄럼방지 특허 기술로, 폭풍처럼 제각된 표면 제품 디자인이 제품 표면에 미끄러운 현상과 강우시작에 인한 작업 환경은 물론 보다 빠르고 정확한 시공을 도와드립니다.



아이스담 (ice damming)
 지붕과 기둥에 쌓인 눈과 얼음이 녹아내리다 지붕에서 얼어붙어 생기는 얼음덩어리에 의한 누수 방지



비하중 동안만 비
 배수구와 기둥의 역류를 유발할 수 있는 강한 비하중에 의한 누수 방지

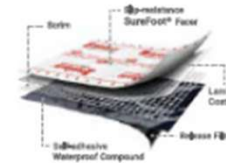
ROOFING COMPONENTS



Strong for the roof. Safe for your crew.

SUREGUARD® PLUS Synthetic Ice & Water Barrier

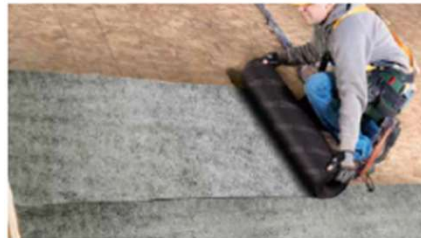
SUREGUARD® PLUS is NEW, innovative, light-weight high performance 'synthetic ice & water barrier' for use under all major roof covering materials. SUREGUARD® PLUS is specially designed to act as an additional line of protection against damage. Our patented slip-resistant surface ensures excellent traction and safe installation, and up-to 90 days UV exposure* and a Lifetime limited warranty *



- Preps Water**
High strength synthetics won't absorb water and have better leak protection
- UV Exposure**
Up to 90 days UV exposure makes job more flexible.
- Accurate Install**
Synthetic underlayment has well marked nailing and overlap guides to help improve installation accuracy and consistency
- Durability**
Tough, durable material that resists small tears and less tearing around fasteners during installation
- Enhanced Walkability**
Technology® slip-resistant surface creates better traction
- Easy/Fast Installation**
Lighter weight products help installation easier to handle and helps improve job site productivity

UNDERGUARD S15 Underlayment

- **Easy to install** - Helps to provide a safe walking surface for roofing professionals and can be installed over the various type of roof decks.
- **Roof deck protection** - Helps increasing flexibility and provides long lasting durability while preventing water infiltration under shingles from wind-driven rain and other source.



Product Specifications

Length	16m
Width	1m
Coverage	16m ² /Ro



Product Specifications

Length	10m
Width	1m
Coverage	10m ² /Ro



Products We make : Insulation

FIBERGLASS INSULATION



ECOTOUCH® insulation is a versatile material that plays many roles in creating high-performing buildings. Improving energy efficiency, reducing sound, and optimizing comfort.

MINERAL WOOL INSULATION



THERMAFIBER® Mineral Wool is the leading pioneer of perimeter fire containment. Mineral wool solutions are dedicated to improving fire protection, thermal performance, and sound control.

XPS INSULATION



FOAMULAR® is a leader in extruded polystyrene innovation and delivers solutions tailored to meet the diverse needs of our customers. XPS maintains its R-value when exposed to moisture and offers a wide range of compressive strengths for design flexibility.

HIGH TEMPERATURE INSULATION



UtiliCore® Mat insulation is a flexible white blanket designed for high-temperature commercial and industrial applications. The pliable, lightweight insulation makes it an excellent choice as core insulation for removable and reusable industrial pipe covers and other industrial pads and blankets.

RUBBER FOAM INSULATION



Insul Cold® is an elastic foamed product with a continuous closed-cell structure, which offers superior thermal conductivity and resistance to water vapor penetration. It provides more solid insulation, anti-condensation and noise reduction functions for HVAC and pipe systems



Products We make : **Insulation**

- A Foundation of Sustainable Insulation Innovations



ECOTOUCH[®] advanced fiber technology makes ECOTOUCH[®] insulation softer on the outside and stiffer on the inside, so it's more comfortable to touch and faster to install.



Thermafiber[®] **Perimeter Containment System:** is a revolutionary perimeter fire containment system designed for floor-to-ceiling glass curtain walls.



FOAMULAR[®] leads the industry with a proprietary blowing agent innovation which reduced greenhouse gas emissions yet maintained the thermal, compressive and moisture resistance properties customers rely on for XPS.



Innovation for a "Sustainable Future"



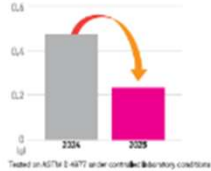
OWENS CORNING ROOFING SYSTEM
Premium performance. Lasting style.

UPGRADED TO A NEW ERA OF SHINGLES

Experience the advanced performance of our shingles with peace of mind. With dramatically reduced granule loss and stronger adhesive power, our shingles deliver lasting protection and reliability, backed by industry-standard tests.

We reduced granule loss

MORE THAN 50%
(compared to the previous year)



OAKRIDGE SUPER

THE PROOF IS IN THE PERFORMANCE

Proven performance is what truly sets Owens Corning shingles above the rest.

GRANULE LOSS TEST (ASTM D 4977)

Your roof's first line of defense is its protective mineral granules. These tiny particles shield shingles from harsh UV rays and keep your roof looking beautiful for years. This test proves how well shingles hold onto these granules—even under tough conditions. Oakridge® Super shingles not only broke our own record, but also achieved the industry's best performance.

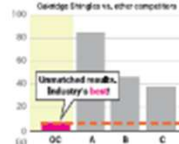
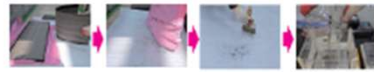


Advanced technology minimizes variation across products, delivering shingles with evenly attached granules and stable, premium quality.



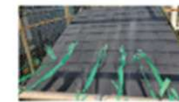
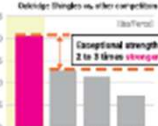
LOOSE PARTICLE TEST (W-01BC)

During transport or installation, some excess granules applied during manufacturing may naturally fall off. This is not a defect and does not affect performance, but to ensure satisfaction for installers and homeowners, Owens Corning conduct this loose particle test to monitor and control this amount. The upgraded Oakridge® Super shingles deliver significantly lower loose granule levels compared to competitors.



BOND STRENGTH TEST (ASTM D 6381)

Our edge-to-edge Super Sealant delivers a powerful grip that's 2-3 times stronger than typical competitors, verified by ASTM testing. Delivering your roof exceptional wind resistance and long-term reliability.



Our product passed the combined TAS 100-95 and ASTM D3161 rain-driven wind resistance test at 140mph (225 km/h), ensuring superior durability under extreme conditions.

HIGH PERFORMANCE WITH BEAUTY TO MATCH

OWENS CORNING BW KOREA, LTD.

Asan Plant: 139-016, 8, Jangsan-ro, Asan-si, Chungcheongnam-do (151-844) tel: 041-840-6100
Daejeon Plant: 100, Talsan-ro, Daejeon-si, Chungcheongnam-do (152-200) tel: 042-210-1910

Compare sales data for information only. Owens Corning does not disclose performance or quality data for ASTM D4977.

Actual performance may vary depending on climate, installation, and maintenance.



특허받은 프리미엄 성능. 루프텍트 방수 시스템

환경 오염과 기후 변화에 따른 대기 온도 상승은 방수층의 손상과 변형 등 지붕에도 심각한 영향을 미치고 있습니다. 어떤 환경에서도 탁월한 방수성능과 구조적인 안정성을 자랑하는 고성능 내열자재로 오웬스코닝이 탄생시킨 루프텍트 방수 시스템. 이제 특허받은 루프텍트 방수시스템으로, 지붕에 안정을 더하세요.



- 고내열성으로 이상 기후에도 시드의 변형 없이, 본래의 뛰어난 방수 기능을 유지합니다.
- 고내구성으로 방수층의 파손을 막고, 후속공정에도 유연하게 대응이 가능합니다.
- 엄격한 품질관리를 통해 안정한 Doubled layer 시트의 특허공정으로 만들 수 있습니다.



고온으로 인한 반사열에 손상된 타사 일반 방수시트



고온에도 이상없는 오웬스코닝 루프텍트 시스템



THE OPPORTUNITY

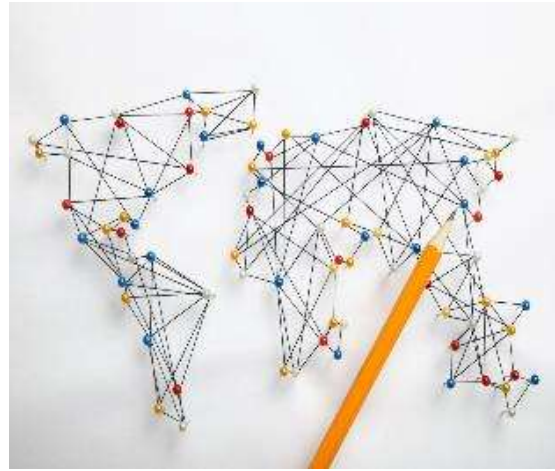
What you will do as a Sales manager

What you Will Experience



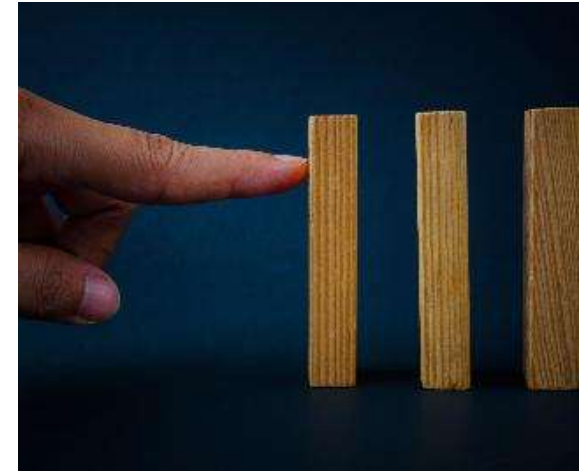
Career Scalability

건축 설계 역량을 기반으로 건축 산업 전반을 움직이는 '건축자재' 시장의 메커니즘을 익히고 비즈니스 리더로 성장



Global Expert

한-일 비즈니스의 핵심 가교 역할
회사와 함께 중장기적으로 성장하는
핵심 인재로 성장



Proactive Environment

프로젝트 스펙인, 유통관리, 기술영업 등
주도적인 매니저급 업무 수행



Key Project & Portfolio

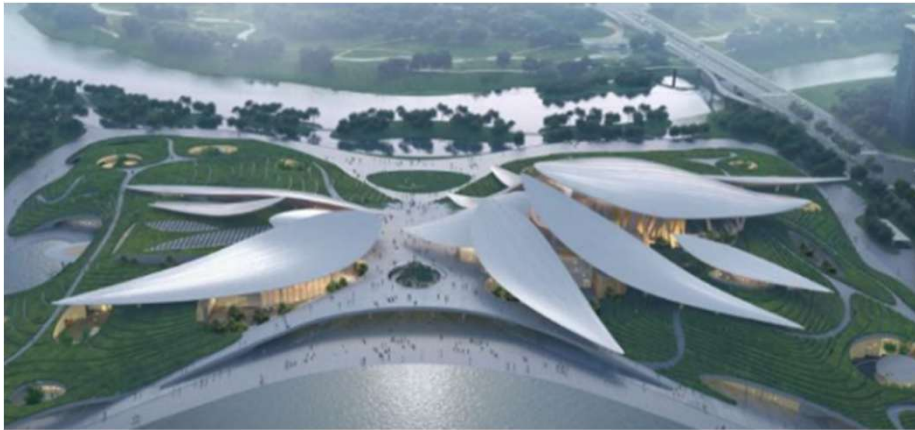


Key Project & Portfolio



Owens Corning name, logo, and trademarks used under license. © 2025 Owens Corning. All Rights Reserved.

Key Project & Portfolio



Anji Cultural and Art Center
China
MAD Architects
* Product: DB475



Key Project & Portfolio



Key Project & Portfolio



Paju Xi Signature
Korea
* Product: SureGuard



Key Project & Portfolio



POSCO Modular GIGATOWN
Korea
Posco
* Product: SureGuard



Owens Corning name, logo, and trademarks used under license. © 2025 Owens Corning. All Rights Reserved.

Key Project & Portfolio



Yong-in Modular Complex house

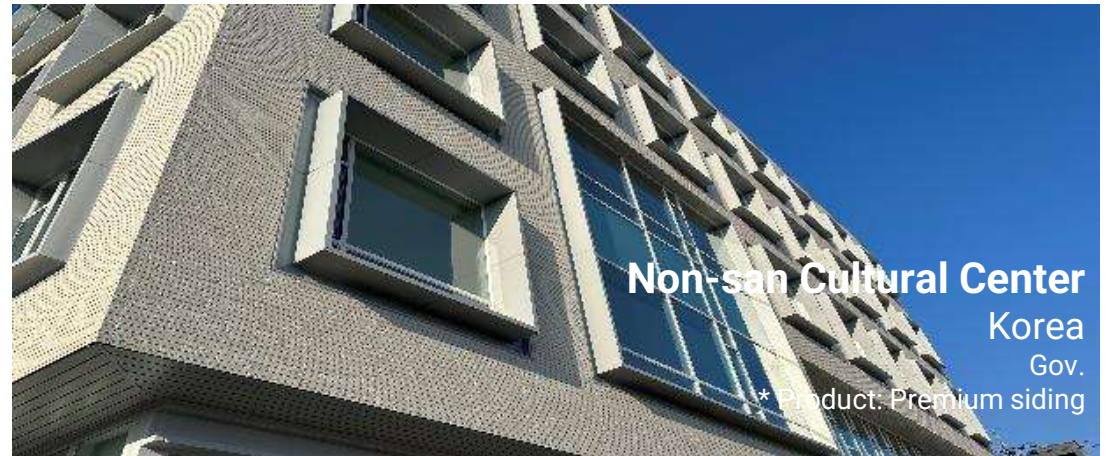
Korea

GH / HEC

* Product: SureGuard



Key Project & Portfolio



Non-san Cultural Center
Korea
Gov.
* Product: Premium siding



BUILD YOUR CAREER

Qualifications & Benefits

Who We are Looking for



학력 & 전공

- 필수조건
 - 건축학 전공자(졸업예정자 포함)
 - 장기 설계 프로그램 수행 역량 보유자
- 우대사항
 - 국내외 역외 건축설계 공모전 수상자
 - 계획 및 상세 디테일 프로젝트 경험자



어학능력

- 필수조건
 - 비즈니스 수준의 영어/일본어 가능자
 - 경어 사용 및 원활한 커뮤니케이션 가능자
- 우대사항
 - 글로벌 비즈니스 매너 우수자
 - 해외 건축 시장 조사 및 분석 역량 보유자



직무 역량

- 필수조건
 - 디자인/설계 tool 숙련자
(Adobe, PS, Ai, CAD, 3D tool)
 - 제안서 작성 및 시각 자료 기획 능력자
- 우대사항
 - 친환경 건축(ZEH, 레벨 인증) 경험자
 - MS Office 활용 능력 우수자(데이터 관리)



Employee Value Proposition



Health & Family

종합건강검진 (배우자포함)
의료비지원(본인)
각종 경조사 지원
자녀학자금
명절 선물 지급

Reward & Recognition

장기근속자 포상
우수사원포상
성과급
퇴직연금 및 4대 보험

Work-Life Balance

연차/경조 휴가제
창립기념일휴무
하계휴가 5일
리조트이용권

Daily Support

종식비 지원
사내 음료 제공
주택자금 대출 지원
업무용차량지원(출퇴근가능)
통신비 지원





지원자격

건축학과 대학 또는 대학원 졸업예정자 및 졸업자

채용방식

1차: 지원서류 및 포트폴리오 심사

2차: Leader group 면접

3차: 대표이사 면접

채용일정

서류접수 : 2026. 07.03

E-mail (Gaelim.Chang@owenscorning-ap.com) 접수

1차 합격자 및 면접 일시 : 개별통보

제출서류 및 제출방법

입사지원서, 졸업(예정)증명서, 성적증명서, 포트폴리오(자유양식)

문의처

인사팀

E-mail : Gaelim.Chang@owenscorning-ap.com





Owens Corning name, logo, and trademarks used under license. © 2025 Owens Corning. All Rights Reserved.